



■制御盤



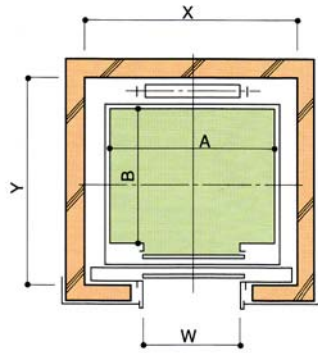
■油圧ユニット



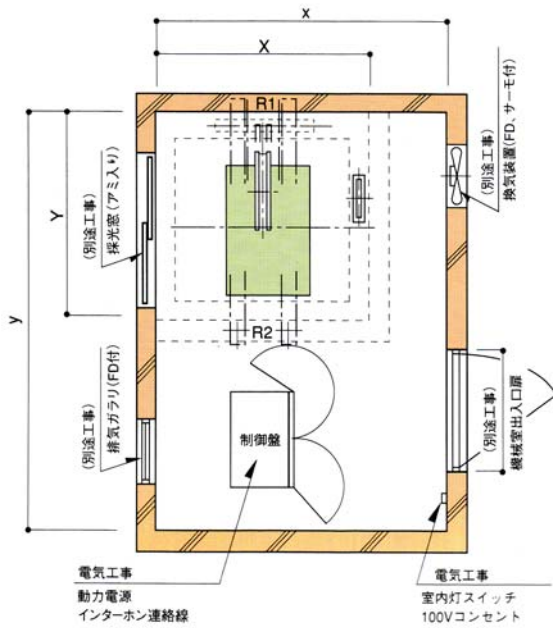
■巻上機

Model	Passenger(Parson)	Load Capacity (kg)	Speed ( m/min)
P-4-2S	4 ●●●●	300	30~90
P-6-2S	6 ●●●●●●	450	30~120
P-6-CO	6 ●●●●●●	450	30~120
PB-9-2S	9 ●●●●●●●●●	600	30~60
PB-9-CO	9 ●●●●●●●●●	600	30~60
PD-11-2S	11 ●●	750	30~60
PD-11-CO	11 ●●	750	30~60
B-15-2S	15 ●●●●●●●●●●●	1000	30~60

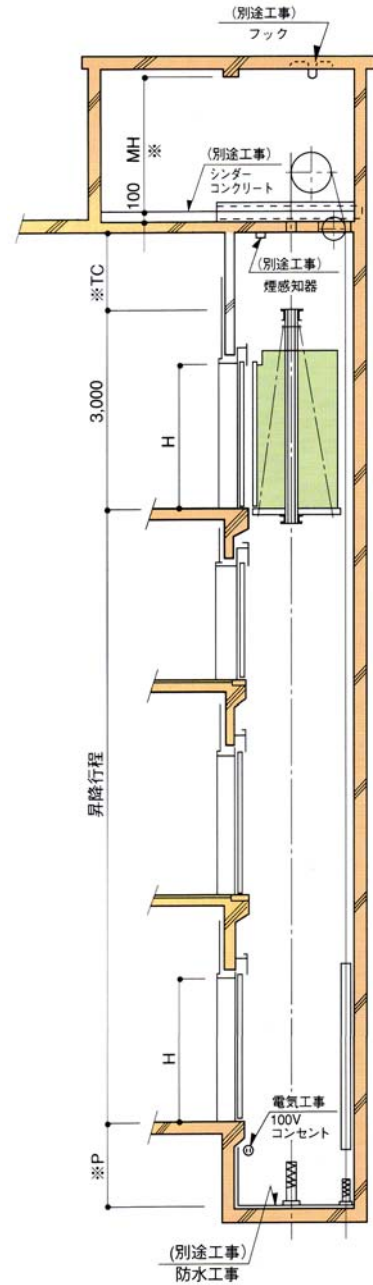




昇降路平面図



機械室平面図

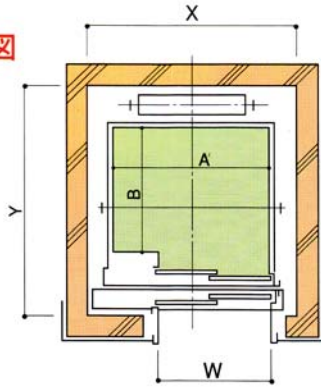


昇降路断面図

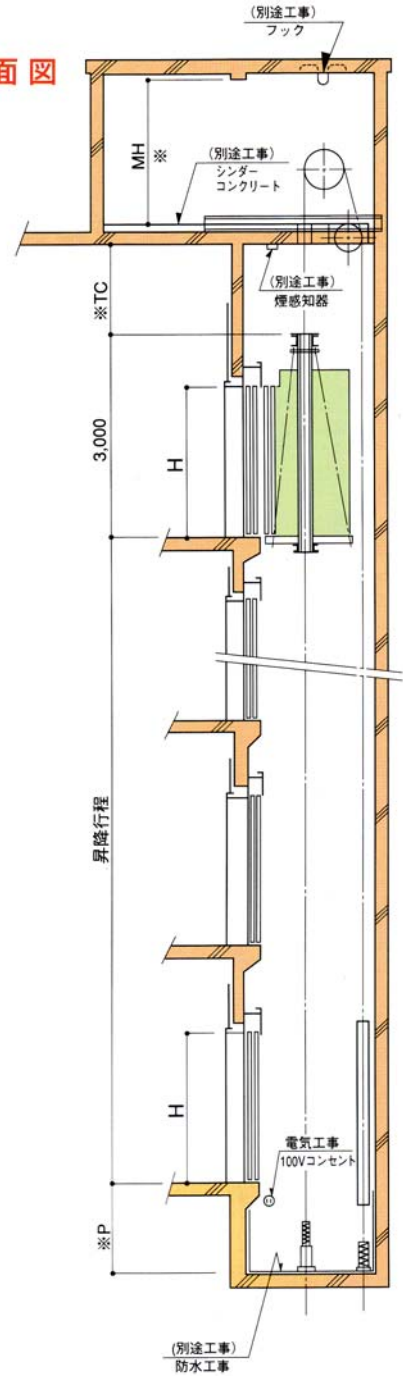
Speed (m/min)	M/C Room Height (MH)	Topclearance (TC)	Pit (P)
45	2100	1250	1250
60		1450	1550
90	2250	1650	1850
105		1850	2150
120		1850	2150

Model	Can Inside	Entrance	Hoistway	Machine Room	Reaction	
	A x B x C	W x H	X x Y	x X y	R1	R2
P-6-CO	1400x850x2300	800x2100	1850x1500	2400x3300	3300	2150
P-9-CO	1400x1100x2300		1850x1750	2400x3400	4000	2800
P-11-CO	1400x1350x2300		1850x2000	2400x3700	4400	3200
P-13-CO	1600x1350x2300	900x2100	2150x2150	3000x3900	5050	4100
P-15-CO	1600x1500x2300		2150x2500	3000x4100	5400	4500

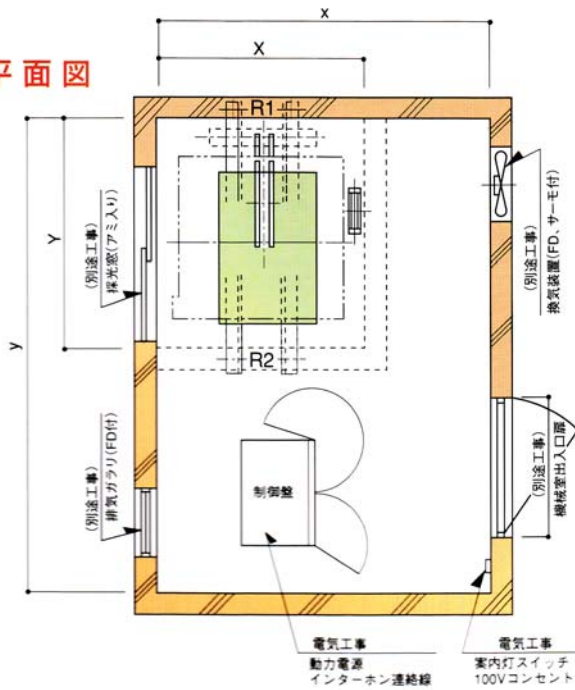
昇降路 平面図



昇降路 断面図



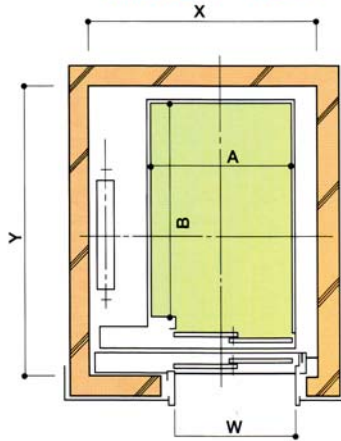
機械室 平面図



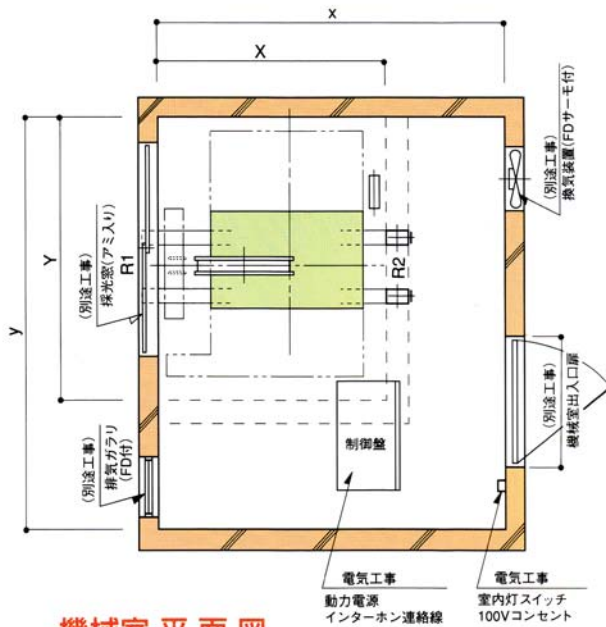
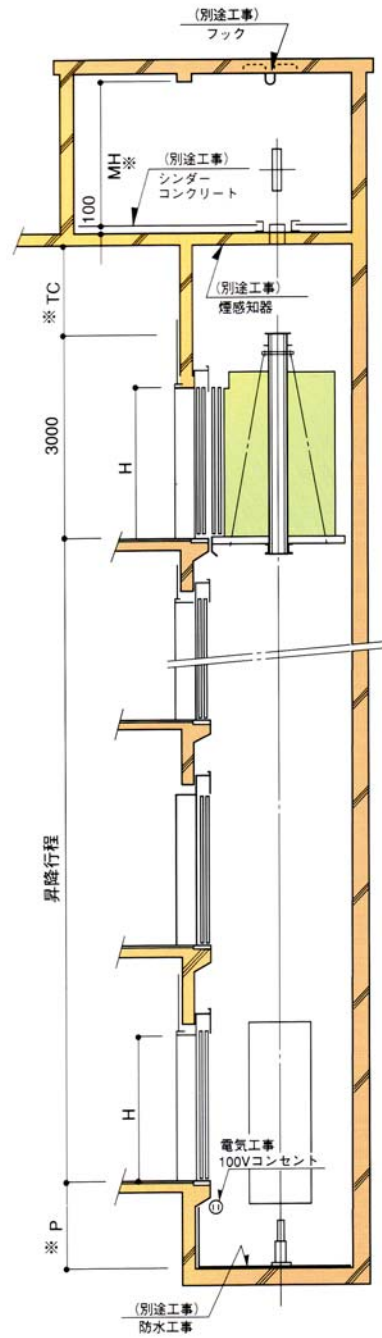
Speed (m/min)	M/C Room Height (MH)	Topclearance (TC)	Pit (P)
45	2100	1250	1250
60		1450	1550
90	2250	1650	1850
105		1850	2150
120		1850	2150

Model	Can Inside	Entrance	Hoistway	Machine Room	Reaction	
	A x B x C	W x H	X x Y	x X y	R1	R2
P-4-2S	1050x750x2300	750x2100	1450x1450	2300x3400	2700	1650
P-5-2S	1150x800x2300	800x2100	1550x1500	2300x3400	3100	1900
P-6-2S	1150x900x2300		1550x1600	2300x3400	3200	2000
P-9-2S	1050x1150x2300		1550x1850	2400x3400	3200	2200
P-9-2S	1050x1520x2300		1550x2200	2400x3800	4000	2800

昇降路平面図



昇降路断面図



機械室平面図

Speed (m/min)	M/C Room Height (MH)	Topclearance (TC)	Pit (P)
30	2050	1250	1250
45			
60		1450	1550

Model	Can Inside	Entrance	Hoistway	Machine Room	Reaction	
	A x B x C	W x H	X x Y	x X y	R1	R2
B-11-2S	1310x2300x2300	1100x2100	2050x2900	2600x4600	5100	3300
B-15-2S	1500x2500x2300	1200x2100	2300x3100	2300x3100	5000	4000